

CARE CARRIES

because your community cares



Care Carries provides new, kid-friendly bags filled with comfort items and essentials to children entering foster care, changing placements, or exiting to reunification or adoption.



A PROGRAM OF **equipped & encouraged**

WHAT'S INSIDE EACH BAG?

PHYSICAL NEEDS



- Sippy Cup or Water Bottle
- Shampoo
- Toothbrush
- Toothpaste

Meeting physical needs calms the nervous system and relieves biological stress.

FELT SAFETY NEEDS



- Stuffed Toy
- Cotton Muslin Blanket

Comfort items provide a sense of security during uncertain times.

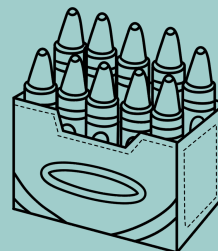
CONNECTION NEEDS



- Card Game
- Activities to Encourage Spending Time Together

Connecting helps build trust and begin establishing healthy relationships.

EXPRESSION NEEDS



- Crayons or Markers
- Coloring Book or Journal

Expression empowers children to create, process, use their voices, and be heard.



Each Care Carries bag is intentionally curated using evidence-based principles designed to support children who have experienced relational trauma. Each item is carefully chosen to meet physical, felt safety, connection, and expression needs for children during some of life's most difficult transitions.